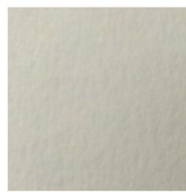


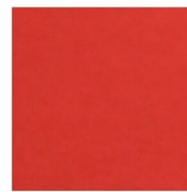
Carta per taglio e incisione laser



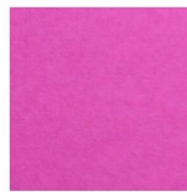
1. PAPERMILK
(CARBIA)



2. REEF BLUE
(CARBLU)



3. BURANO
ROSSO SCARLATTO
(CARBUR)



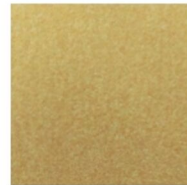
4. BURANO
CICLAMINO
(CARBUR)



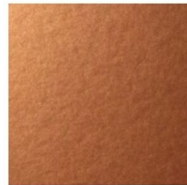
5. DALI' NERO
(CARDAL)



6. DALI' BORDEAUX
(CARDAL)



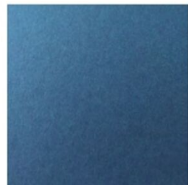
7. STARDREAM
GOLD
(CARSTA)



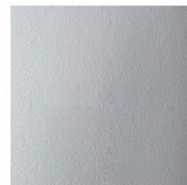
8. STARDREAM
COPPER
(CARSTA)



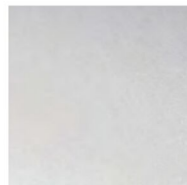
9. STARDREAM
VISTA
(CARSTA)



10. STARDREAM
LAPISLAZULI
(CARSTA)



11. STARDREAM
SILVER
(CARSTA)



12. STARDREAM
CRYSTAL
(CARSTA)



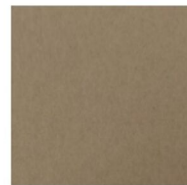
13. TWIST
LILLA
(CARTWI)



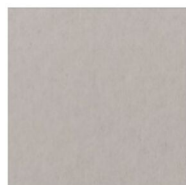
14. TWIST
YELLOW
(CARTWI)



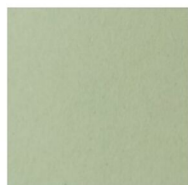
15. TWIST
RED
(CARTWI)



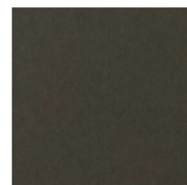
16. CRUSH
NOCCIOLA
(CARCLU)



17. CRUSH
MANDORLA
(CARCLU)



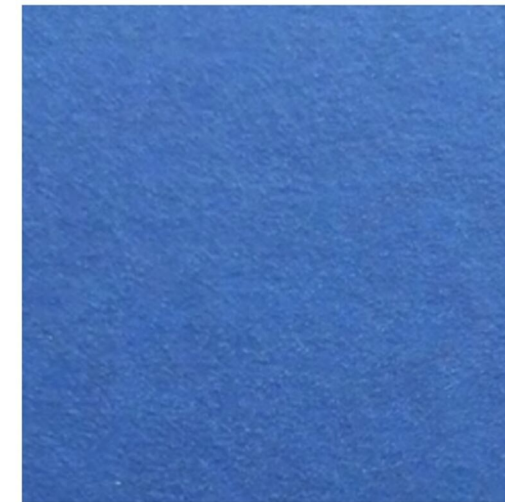
18. CRUSH
KIWI
(CARCLU)



19. CRUSH
CAFFE'
(CARCLU)



20. LEATHERLIKE
BLACK
(CARLEA)



2. REEF BLUE
(CARBLU)

Indice carte e grammature

1 PAPERMILK (CARBIA)	gr.350	11 STARDREAM SILVER (CARSTA)	gr.285
2 REEF BLUE (CARBLU)	gr.330	12 STARDREAM CRYSTAL (CARSTA)	gr.285
3 BURANO ROSSO SCARLATTO (CARBUR)	gr.250	13 TWIST LILLA (CARTWI)	gr.290
4 BURANO CICLAMINO (CARBUR)	gr.250	14 TWIST YELLOW (CARTWI)	gr.290
5 DALI' NERO (CARDAL)	gr.285	15 TWIST RED (CARTWI)	gr.290
6 DALI' BORDEAUX (CARDAL)	gr.285	16 CRUSH NOCCIOLA (CARCLU)	gr.250
7 STARDREAM GOLD (CARSTA)	gr.285	17 CRUSH MANDORLA (CARCLU)	gr.250
8 STARDREAM COPPER (CARSTA)	gr.285	18 CRUSH KIWI (CARCLU)	gr.250
9 STARDREAM VISTA (CARSTA)	gr.285	19 CRUSH CAFFE' (CARCLU)	gr.250
10 STARDREAM LAPISLAZULI (CARSTA)	gr.285	20 LEATHERLIKE BLACK (CARLEA)	gr.360